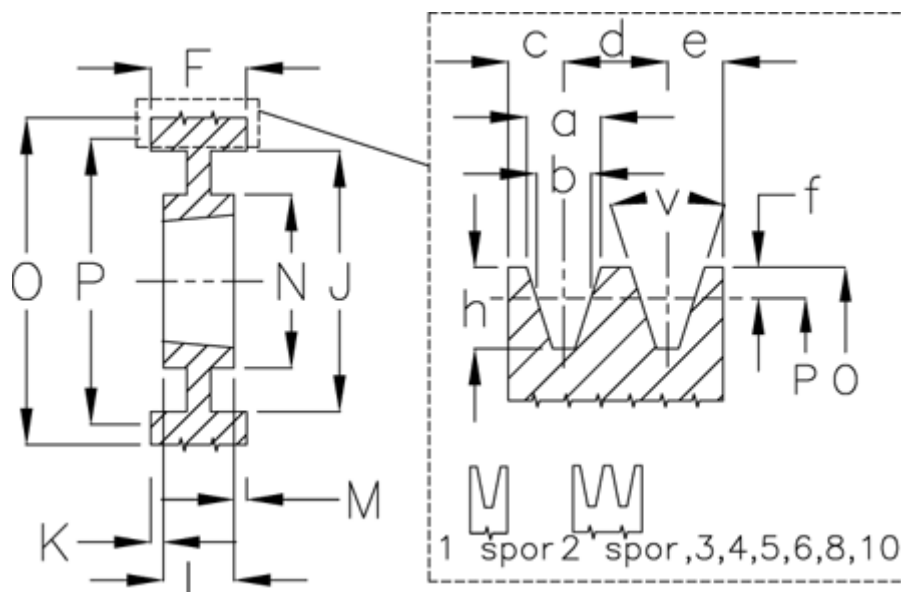


Article number: 604110018002

Description: V-belt pulley SPA 180/2 TL2012

Measures



a	= 12.7	F	= 35	Number of grooves = 2	
b	= 11.0	For bush	= 2012	O	= 185.5
Bush \varnothing max	= 50	h	= 13.8	P	= 180
c	= 10.0	J	= 146	Type	= SPA
d	= 15.0	K	= 1,5	v (degrees)	= 38
e	= 10.0	L	= 32		
E	= 10	m	= 1,5		
f	= 2.8	N	= 108		